



Mini-Meg 100



PCT Systems Mini-Meg is a fully functional megasonic system with the portability to allow it to be used in a fume hood or mounted on a small wet bench. Just as with fully featured megasonic systems, virtually any megasonic action can be done with Mini-Meg. Process action include Particle to Resist Removal, Sonochemical Reactor, Acoustic Chemical Enhancements, 2D Graphene Particles, and many more.

**MEGASONIC
FREQUENCIES**

**700kHz 950kHz Available*

**SELF-CONTAINED
READY TO USE**

**Tank, Transducer Plate, Generator*

**COMPACT SIZE
BIG POWER**

**2 Channels 350 Watts Each*

Features and Benefits

- ✓ Choice of Frequencies 700kHz and 950kHz
- ✓ Stainless Steel or PVDF Tank for a Variety of Chemicals
- ✓ Compact Design with 4 Inch x 5 Inch Acoustic Area
- ✓ Programmable Recipes
- ✓ Inhouse Manufacturing to Guarantee Quality and Delivery
- ✓ Options Include Heater Control and Heater for Stainless Steel Tank, Tank Liners in Quartz or PVDF

pctsystems.com

Fully Functional Megasonics System



Mini-Meg 100

Mini-Meg 100 Tank

Operating temperature 70°C

PVDF Tank Mechanical Specifications

Outside Dimensions

Inside Dimensions Width Length Height

8.75" x 9.50" x 9.55"

6.75" x 7.50" x 5.80"

Material of Construction PVDF Plastic

Drain Port 1/2" MNPT

Stainless Steel Tank Mechanical Specifications

Outside Dimensions

Inside Dimensions Width Length Height

8.75" x 10.58" x 10.51"

6.75" x 7.50" x 5.81"

Material of Construction Electro Polished Stainless Steel

Drain Port 1/2" MNPT

Model 6000 Mini-Meg Generator

Mechanical Specifications

Size Width 14.0", Length 14.0", Height 5.0"

Material of Construction Anodized Aluminum

Mounting Horizontal or Vertical

Electrical Specifications

Voltage Rating 208-240 VAC, 50/60 Hz

Current Rating Max 10 amps

Environmental Operating Range 0° to 27°C

Storage Temperature Range -25° to 50°C

Megasonic Amplifier Operation Specifications

Independent Power & Frequency Control for each RF Output

Number of Channels 2

Maximum RF Output per Channel 350 watts

Programmable RF Output Range 0 to 350 watts per Channel

Programmable Recipes / Channel 7

RF Output Power Tolerance +/- 10%

Output Designations Array 1, Array 2

Frequency Bands (Choice of 1) 750kHz, 950kHz

Frequency Resolution 100 Hz

Frequency Accuracy +/- 100 Hz

Programmable Sweep Functionality 1-10 KHz

RF Output Connectors DB15 Female connectors for each channel with internal safety loopback

Displays/User Interface

Power On/Off Switch

4 Line 40 Character LCD with keypad or PDA/LCD Touch Screen

Monitoring for Frequency vs. Time, Power vs. Time, and more

Facilities Requirements

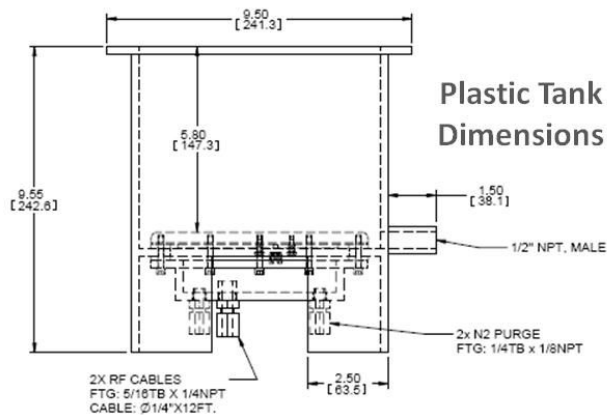
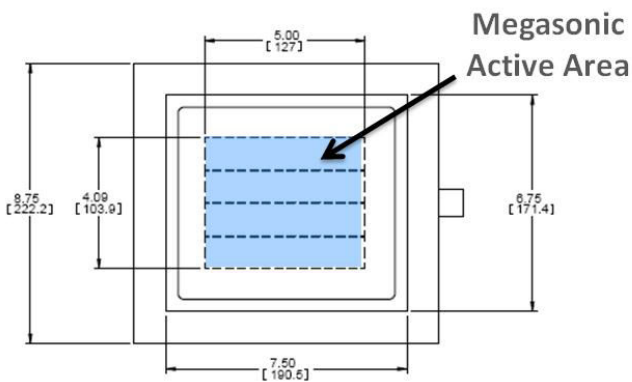
N2 or CDA supply 1-2 psi @ 1/4 scfm

PCT Certifications ETL File No. 567511 per UL 3101-1 and CSA 1010.1

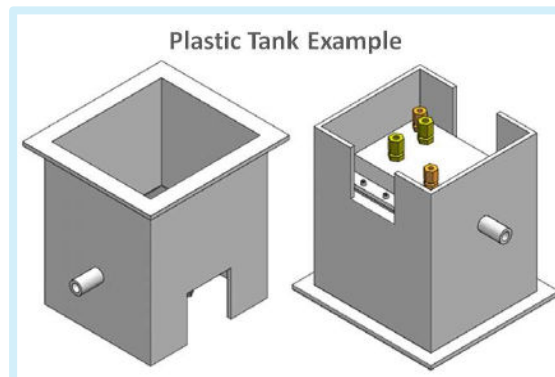
CE EN 61010-1 European Safety Approval CE EN 55011 European EMI

Approval CE EN 50082-2 European ESD, RF, and Transient Susceptibility

Approval



pctsystems.com



PCT SYSTEMS MINI-MEG 100